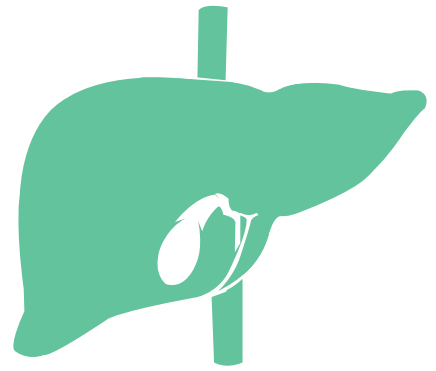


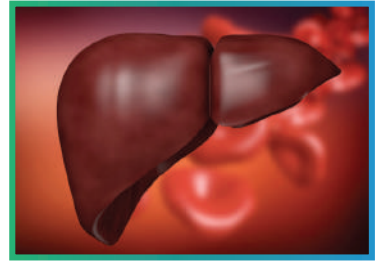
*A healthy family  
is always  
a **liver**  
friendly family*



Original **GERMAN MADE** Homoeopathic Medicines  
**DR. RECKEWEG & CO**  
GERMANY GMBH

# Human LIVER

Liver is the powerhouse of the body. Its primary role is the synthesis of fuel components for other organs use. Liver plays an important role in stabilizing metabolism & carbohydrate storage. It also stabilizes blood glucose level.



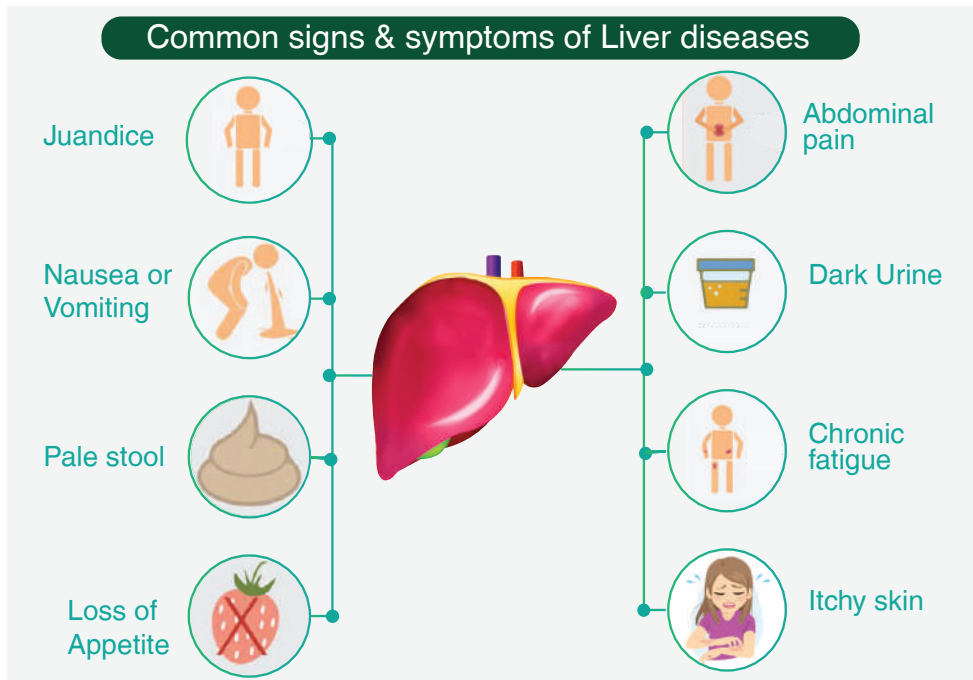
## Functions of the Liver

Main functions of Liver are

- Carbohydrate, Protein and Lipid (fatty acid) metabolism,
- Steroid production
- Formation and secretion of bile
- Detoxify blood from harmful and poisonous substances
- A principal site of drug metabolism
- Make proteins important for prevention of blood clotting and other functions
- Filter the blood before passing it to the rest of the body

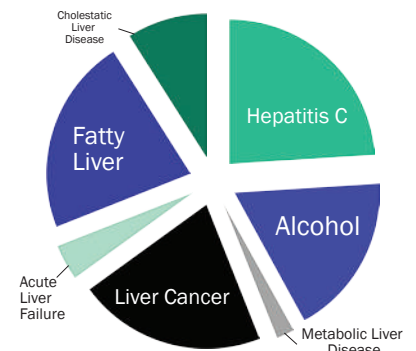
## What LIVER produces?

The liver produces glucose from its own (glycogen) stores, muscle lactate, and fatty tissue. It also responds to a high blood glucose by increasing its uptake of glucose and depositing it in its storage mechanism as glycogen.



## Liver disease progression in Pakistan

Pakistan has the 2nd highest estimated prevalence of hepatitis C worldwide, with very high frequency of Cirrhosis. Cirrhosis is a major cause of the liver damage leading to major mortality (Death) cause in Pakistan. It is believed that 20 to 25 per cent of population are infected with the Hepatitis B & C. It is concluded that Hepatitis C is the most common cause of chronic liver disease diagnosed in JPMC, Karachi. Most of the patients with chronic liver disease has upper GI Bleed. Majority of the patients with longer duration of disease were anemic.

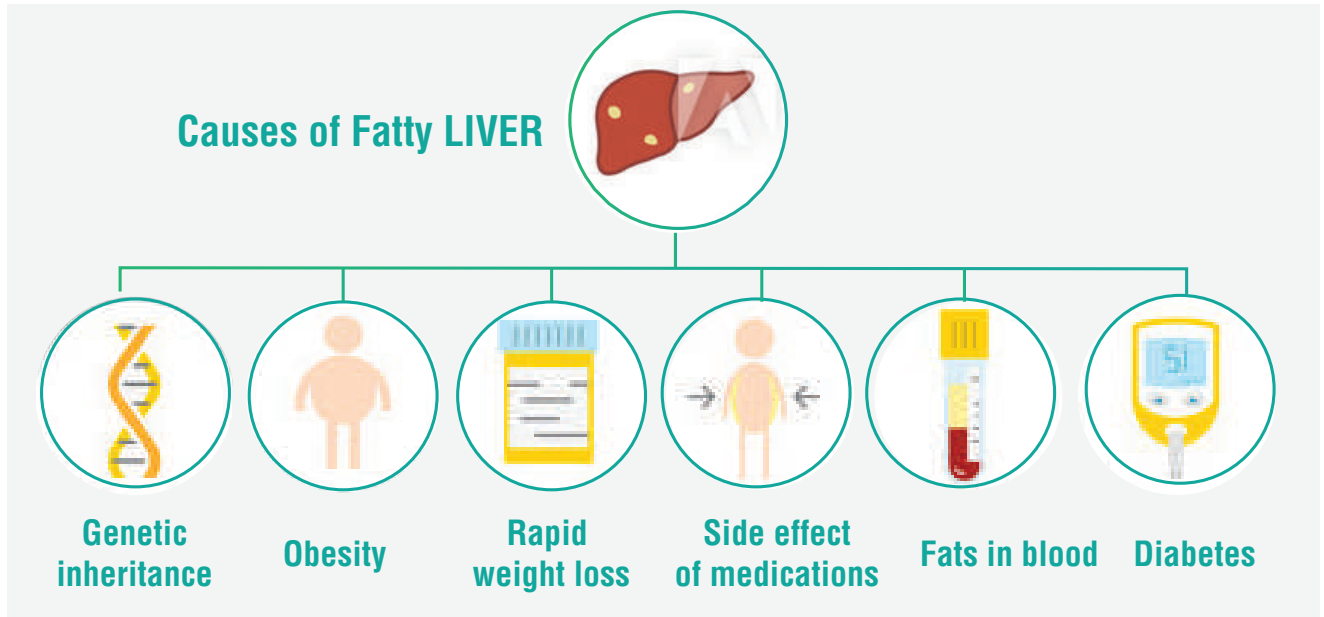


\* Reasons of Liver failure

The malfunctioning of Liver if neglected shall eventually result in critical health conditions.

## **NAFLD** Non Alcoholic Fatty Liver Disease

NAFLD is the most common form of chronic liver disease. Individuals with NAFLD can develop nonalcoholic steatohepatitis (NASH), an aggressive form of fatty liver disease, marked by liver inflammation and may progress to advanced scarring (cirrhosis) and liver failure. This damage is similar to the damage caused by heavy alcohol use.



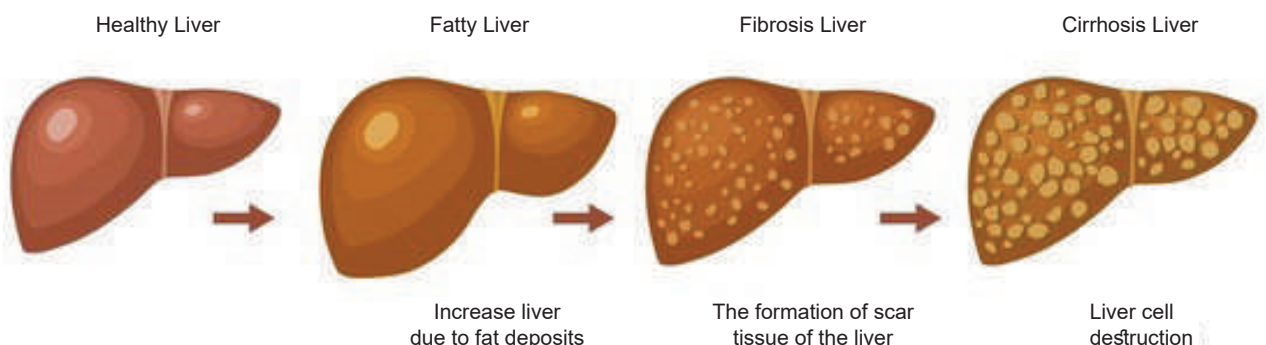
## **LIVER** Cirrhosis

Cirrhosis is a late stage of scarring (fibrosis) of the liver such as Hepatitis and chronic alcoholism. When liver is injured it tries to repair itself. In this process, scar tissue forms. As cirrhosis progresses, more and more scar tissue form, making it difficult for the liver to function normally. Cirrhosis often has no signs or symptoms until liver damage is extensive.

Signs and symptoms include:

Fatigue, bleeding, loss of appetite, nausea, swelling in legs, feet or ankles (edema), weight loss, itchy skin, yellow discoloration in the skin and eyes (jaundice), fluid accumulation in your abdomen (ascites)

### Stages of liver damage

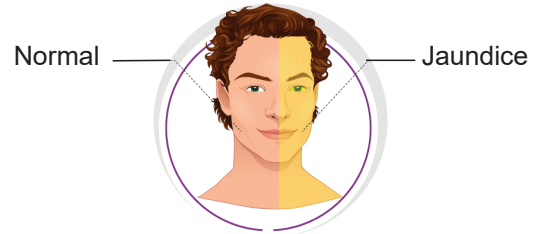


# Jaundice

Jaundice is a yellowing of the skin and the whites of eyes that happens when the body does not process bilirubin properly. This may be due to a problem in the liver. Jaundice most often happens as a result of an underlying disorder that either causes the production of too much bilirubin or prevents the liver from getting rid of it. Both of these result in bilirubin being deposited in tissues.

## Sign and symptoms of jaundice include:

Yellow tinge of the skin, pale stools, dark urine, itchiness



## **LIVER** and it's associated Drug Metabolism

Various liver diseases are known to affect the Metabolism of Drugs. Several reasons are altered hepatic blood flow, altered availability of co-substrates, and altered binding of drugs to plasma proteins can account for the observed changes in drug metabolism in patients with liver disease.

### LIVER FUNCTION TEST(LFT)

Test	Measurement	Limit
<b>ALT</b> Alanine transaminase	If liver damaged or not functioning properly, ALT level can be elevated into the blood.	ALT above 25 IU/L in females and 33 IU/L in males.
<b>AST</b> Aspartate aminotransferase	In liver damage, level of AST can be released into the bloodstream. High level of AST might indicate a problem	Up to 40 IU/L in adults and may be higher in infants and young children.
<b>ALP</b> Alkaline phosphatase	High levels of ALP may indicate liver inflammation, blockage of the bile ducts, or a bone disease.	Normal range for ALP is typically up to 120 U/L in adults.
<b>Albumin</b>	A low result on this test can indicate that your liver isn't functioning properly.	The normal range for albumin is 3.5–5.0 (g/dL).
<b>Bilirubin</b>	Elevated level of bilirubin indicates that liver isn't functioning properly.	The normal range for total bilirubin is typically 0.1–1.2 (mg/dL).
<b>Liver Protein</b>	Total Protein measures the amount of protein in your blood. The two main proteins found in the blood are globulins and albumin	Low globulin levels can be a sign of liver damage or other conditions. Low albumin levels can be a sign of liver damage



# Homeopathic Medicines

being used to treat Liver & it's related problems are



## Dr. Reckeweg R-7 - Liver and Gallblader Drops

**Indications:** Organic and functional complaints of liver and gallbladder, Hepatopathy, Hepatitis, Cholecystopathy, Calculi, Disturbances of the biliary secretion, Swelling of the abdomen, Constipation.

**Formula:** Carduus mar, Chelidonium, China, Cholesterinum, Colocynthis, Lycopodium, Nux Vomica.

**Dosage:** 3 - 6 times daily 10 - 15 drops in a little water, or as prescribed by the physician.



## Dr. Reckeweg R-131 - Carduus Hepatic Drops

**Indications:** Cirrhosis of the Liver, Hepatitis, Jaundice, Pancreatic Dysfunction, Chronic liver disease due to high intake of alcohol and Anti lipid or Anti-hypertensive drugs, etc.

**Formula:** Carduus mar, Chimaphilla, Juglans, Phaseolus, Quassia, Taraxacum, Scilla, Sarsaparilla.

**Dosage:** 5 Drops three times daily, or as prescribed by the physician.



## Dr. Reckeweg R-31 - Anaemia Drops

**Indications:** Anaemia, Lack of appetite especially among children often accompanied by swellings.

**Formula:** Aranea Diadema, Arsen. jodat., China, Ceanoth. Americ. Ferrum chlorat D6, Lycopodium, Sulfur.

**Dosage:** 3 - 6 times daily 10 - 15 drops in a little water, or as prescribed by the physician.



## Dr. Reckeweg R-37 - Intestinal Colic Drops

**Indications:** Abdominal spasms of liver, Flatulent colic, Intestinal colic, Bilius colic, Used as a complementary remedy for renal colic.

**Formula:** Alumina, Bryonia, Colocynthis, Lachesis, Lycopodium, Plumbum acetic, Sulfur.

**Dosage:** 3 times daily 10-15 drops in little water before meals, or as prescribed by the physician.



## Chelidonium Maj Mother Tincture

**Indications:** Jaundice due to Hepatic and Gall-bladder obstruction, Gall-colic distention, Liver enlarged, Gallstones, etc

**Dosage:** As prescribed by the physician.

### Single Remedies

### Key Symptoms/ Effect in Remedy

#### Lycopodium

Lycopodium clavatum is a species of club moss, an ancient group of plants that evolved nearly 400 million years ago. Homeopathic Lycopodium clavatum is prepared from a tincture of the dried spores. The 6C dilution is a popular choice for gas pain relief, or from bloating associated with acid indigestion.

#### Nux Vomica

Nux Vomica act as a tonic, and as an appetite stimulant.

<b>Chelidonium</b>	Chelidonium is a homeopathic remedy routinely used against various liver disorders. Chelidonium majus (greater celandine) is an herb with hepatotoxic properties in its undiluted tincture or herbal form but it has also been shown to have hepatoprotective, antitumor, and immunostimulatory actions. Crude extracts of Chelidonium majus, and its purified compounds have been reported to exhibit anti-viral, anti-inflammatory, anti-tumor and anti-microbial properties.
<b>Sarsaparilla</b>	Sarsaparilla has shown protective effects on the liver. Research conducted found that compounds rich in flavonoids from sarsaparilla was able to reverse damage to the liver and help it function at its best.
<b>Carduus Marianus</b>	Carduus marianus, for support of liver problems. Carduus provides a long history of use in traditional herbal medicine.
<b>Bryonia</b>	Bryonia root contains a resin that has a strong laxative effect. Bryonia is used as a laxative to relieve constipation and act as an emetic. Bryonia is also used to treat stomach and intestinal diseases, lung diseases, arthritis, liver disease, and metabolic disorders; and to prevent infections. It is also used to increase urination to relieve fluid retention.

## Research Based Evidence

- 1 Study conducted by rehabilitation clinic specializing in internal medicine and rheumatology showed elevated values of the gamma-glutamylcyclotransferase in the patients, the most frequent cause of this higher level gamma-glutamylcyclotransferase is high ethyl alcohol consumption indicating the damage of liver and bile duct. Patient treated with Dr. Reckeweg R7 Hepagalen during the study, shows a greater percent decrease of gamma-glutamylcyclotransferase level.
- 2 Study on "Successful Treatment of Chronic Viral Hepatitis with High-dilution Medicine" shows viral hepatitis cases that have failed viral conventional therapies were used to treat with high dilution homeopathic medicines Chelidonium majus 6X and Thuja 30C. Results shows patients are alive and functioning normal in their home environments more than 2 years after their treatment initiation.

## References

1. <https://www.thenews.com.pk/print/348089-400-people-losing-life-to-hepatitis-in-pakistan-daily>
2. Ref: Reckeweg-Journal 01/2008.
3. Ref: <https://www.ncbi.nlm.nih.gov/pmc/articles/PMC3833483/>
4. <https://www.imedpub.com/articles/the-burden-of-chronic-liver-disease-patients-their-clinical-and-laboratory-profiles-at-jinnah-postgraduate-medical-centre-karachi.pdf>
5. <http://www.journalrnc.com/volumes/1425736188.pdf>



# DR. SALIM AHMED & CO.



704 - 7th Floor, Block A, Saima Trade Tower,  
I.I. Chundrigar Road, Karachi. 74000 Pakistan.



021-32271777, 32275000



[www.reckeweg.pk](http://www.reckeweg.pk)



[marketing@reckeweg.pk](mailto:marketing@reckeweg.pk)



0336-2850727



[Dr.Reckeweg.pk](https://www.facebook.com/Dr.Reckeweg.pk)

